

HISTORIC RESOURCES OF DALLAS COUNTY
DALLAS COUNTY, ARKANSAS

ARKANSAS HISTORIC PRESERVATION PROGRAM

Survey Number DA-14

Owner Ms. Mary Frances Doherty

Property Name Captain Goodgame House

Address Route 2, Box 164

Location Holly Springs

Sparkman, AR

71763

Significant Date/s 1918

ARCHITECTURAL DESCRIPTION

This simple frame one-story dwelling, sheathed with novelty siding, with central hall plan, gable roof and full-length front porch represents a traditional vernacular house type popular throughout Arkansas. Typical also of the more spacious and somewhat more affluent houses is the rear ell containing two rooms. The house was originally built with a separate kitchen which has since been removed. (The kitchen is now located in the rear room of the ell which originally served as the dining room.) The hipped roof, full-length front porch supported by plain chamfered posts and the symmetrical arrangement of the central doorway flanked by two windows on each side are, again, typical for the area. Among the unusual architectural features of the house are the extraordinarily high foundation of brick piers, and several decorative elements. Chief among these are the prominent pediments in the gable ends formed by the extended cornice. The front door and long two-over-two double-hung windows throughout the house are accented by finely crafted mouldings over each opening. On the interior, the high-ceilinged rooms exhibit finely crafted details in the interior doors and woodwork. The long five-panel walnut doors are surmounted by a one-light transom with wide surrounds. Although traditional, the spacious rooms and fine architectural details of this house distinguish it from the simpler interpretations of the one-story central hall house in the county.

STATEMENT OF SIGNIFICANCE

The 1918 Captain Goodgame House is located in Holly Springs. This community, situated in the southwest part of the county, was settled in the late 1830's. However, the Goodgame House is the only remaining historic dwelling in Holly Springs. Although the 1918 construction date does not reflect the town's most important period, the structure's central hall plan represents a prevalent house type of the area in the 19th century. Architecturally, the house stands, in one respect, as a simple traditional plan but unlike the typical plan has somewhat more finely crafted affluent elements, among them being the pedimented gable ends and the decorative window and door mouldings. The structure's late construction date reflects the persistence of the traditional house plan. The house, however, does reflect an evolution of the traditional plan. The ell, unlike its traditional role as an appendage, is part of the original house plan.

Acreage: less than 1

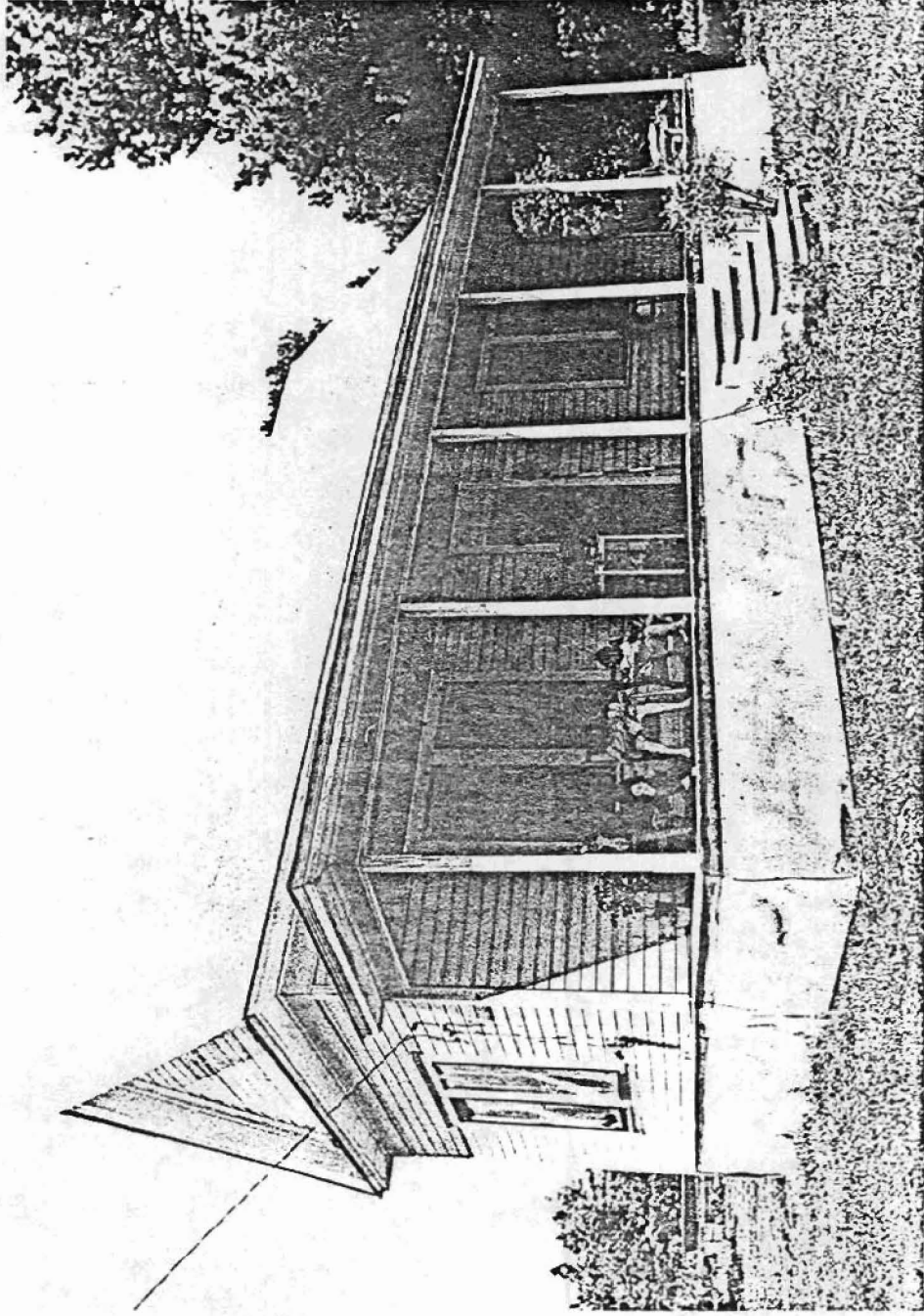
Quadrangle Name: Holly Springs

Quadrangle Scale: 1:24000

UTM Reference: 15 526420/3742000

Verbal Boundary Description:

The nominated property, located within the NW $\frac{1}{4}$ of the NW $\frac{1}{4}$ of the NE $\frac{1}{4}$ of section 35, T10S R16W, is bounded on the north by a county road and on the south, east, and west by lines running parallel to and 100' from the south, east, and west facades of the house.



DA-14
Captain Goodgame House
Don Brown, photographer
June 2, 1982
Negative on file at the AHPP
View from the Southeast