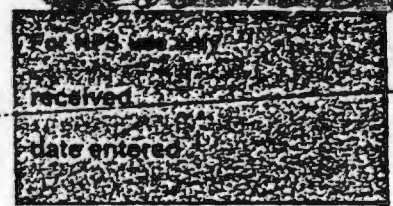


United States Department of the Interior
National Park Service

EXP 12/31/84

National Register of Historic Places
Inventory—Nomination Form



Continuation sheet 172 Item number 1,2,4,6, & 10 Page 1

INDIVIDUAL DATA SHEET

General Description

Code: JE-049	Congressional District: Fourth
Name: Katzenstein House	Current Owner: John F. Wilson
Address: 902 West 5th Pine Bluff, Arkansas	Address: 902 West 5th Pine Bluff, Arkansas
County: Jefferson	

Architectural Information

Architectural Firm: Charles Thompson	
Date of Construction: 1913	Stylistic Influence: Craftsman
Original Use: Residence	Present Use: Real Estate Office

Geographical Information

UTM Reference: 15 590920/3787360	Acreage: Less than one
Verbal Boundary Description: James Addition Block 11, East 1/4 of Lot 2	

Condition

<input checked="" type="checkbox"/> Excellent	<input type="checkbox"/> Deteriorated	<input type="checkbox"/> Unaltered
<input type="checkbox"/> Good	<input type="checkbox"/> Ruins	<input checked="" type="checkbox"/> Altered
<input type="checkbox"/> Fair	<input type="checkbox"/> Unexposed	

National Register of Historic Places Inventory—Nomination Form

For NPS use only
received
date entered

Continuation sheet 173

Item number 7 & 8

Page 2

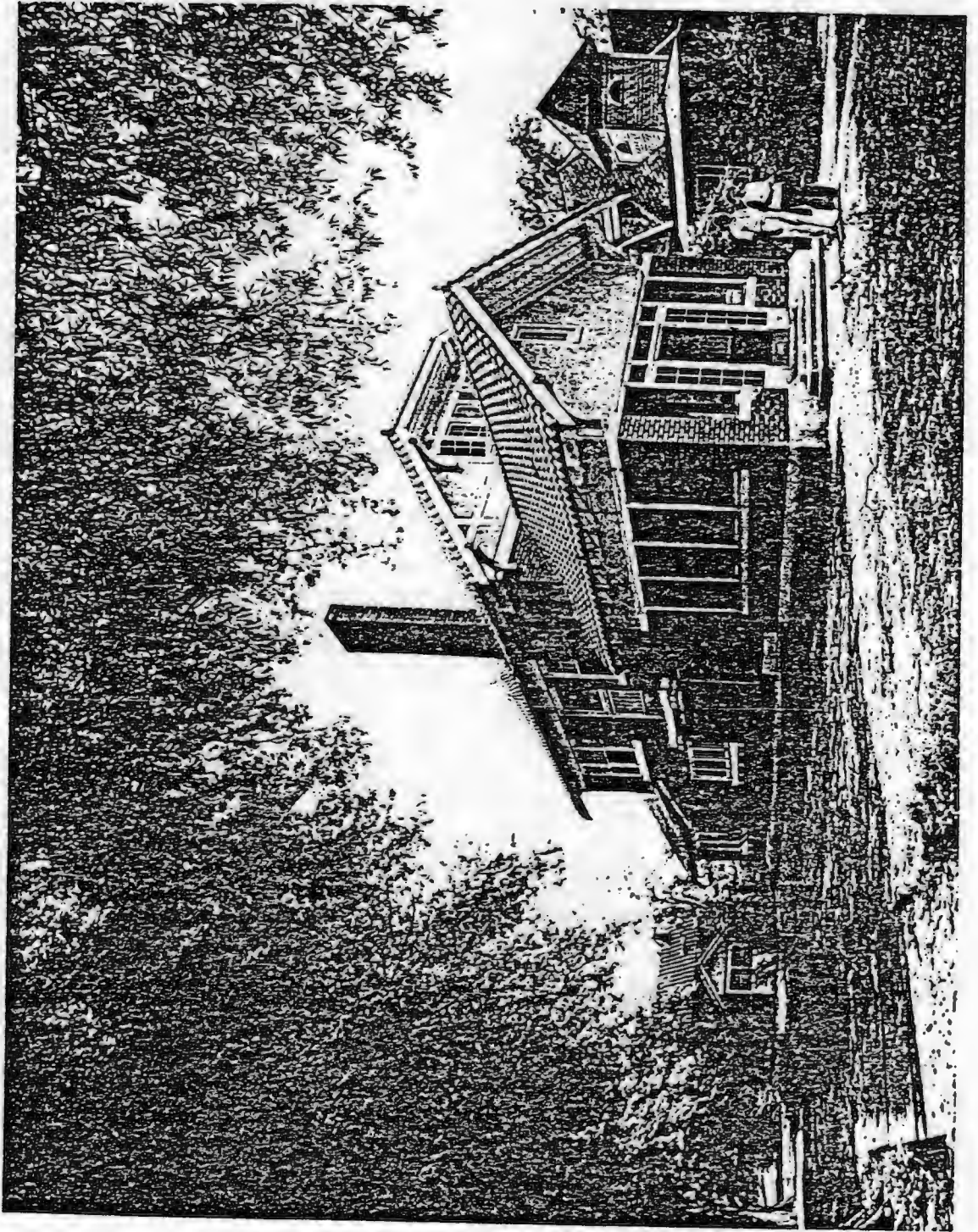
Code: JE-049 (902 West 5th, Pine Bluff, AR)

Physical Description

This two-story house, faced with brick, is located on a corner lot in a residential area of Pine Bluff. A row of large oak trees shades the house on the east elevation facing the side street. The simple rectangular structure features a clipped front gable tile roof. Breaking the boxy outlines is the one-story front gable roof projection enclosing the front porch. Both the gable ends feature stucco with half-timbering effects and large brackets. A group of five narrow casement windows lines the front gable. The broad sash windows have twelve-over-one lights. The once open porch is now screened in.

Statement of Significance

The Katzenstein House at 902 West Fifth Avenue in Pine Bluff was designed by Charles L. Thompson in 1913. Located within the Pine Bluff Fifth Avenue Historic District, this Craftsman house is an integral part of the streetscape of Pine Bluff's Fifth Avenue. It's massing is similar to that of a Foursquare house yet its projecting entry porch and clipped gable roof present a unique street facade. Following the proportions of its rectangular corner lot the Katzenstein House has a narrow floorplan. Unusual for a Craftsman house, the short side is presented as the front facade.



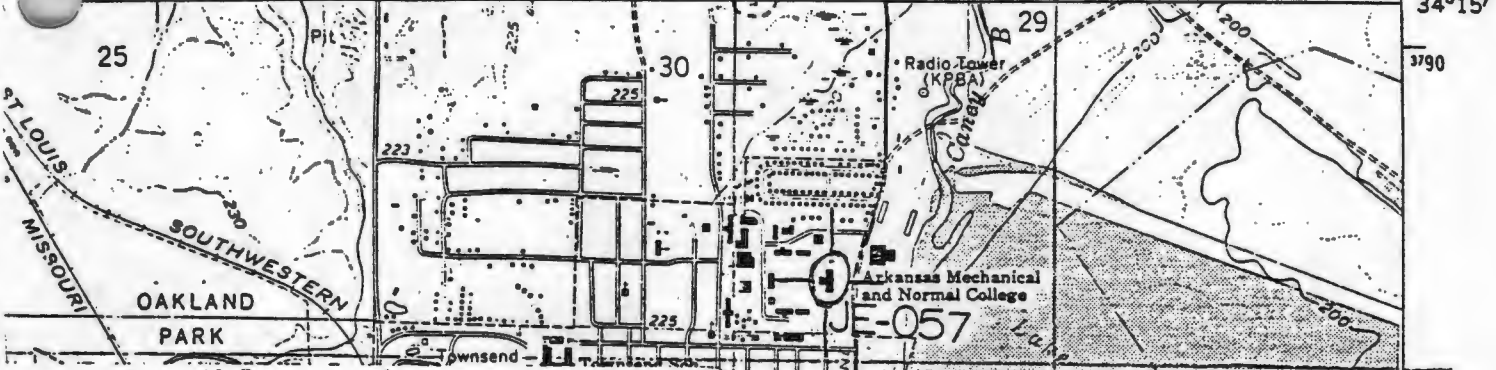
PINE BLUFF QUADRANGLE

ARKANSAS—JEFFERSON CO.

7.5 MINUTE SERIES (TOPOGRAPHIC)

7632 IV SW
(ROB ROY)

W. 2'30" 89 1990 000 FEET R. 9 W. 90 15 79 STUTTGART 35 MI. 5.2 MI. TO JUNQ. U.S. 79 AND ARK. 15 92°00' 34°15'



STRUCTURES IN ARKANSAS REPRESENTED BY THE CHARLES L. THOMPSON DESIGN COLLECTION - THEMATIC GROUP

Pine Bluff, Jefferson Co., Arkansas
 Quadrangle Name: Pine Bluff, Ark.
 Scale: 1:24,000
 M Reference:

JE-045	15	591610/3786150
JE-046	15	591590/3786610
JE-048	15	591120/3787310
JE-049	15	590920/3787360
JE-050	15	590580/3787360
JE-051	15	591490/3786360
JE-052	15	591510/3785950
JE-053	15	591470/3785840
JE-054	15	591460/3785710
JE-055	15	590825/3786560
JE-056	15	591144/3785845
JE-057	15	590300/3789250

