

NR listed 9/10/92

OMB No. 1024-0018

NPS Form 10-900  
(Rev. 8-86)

United States Department of the Interior  
National Park Service

NATIONAL REGISTER OF HISTORIC PLACES  
REGISTRATION FORM

1. Name of Property

historic name: New Liberty School

other name/site number: L00042

2. Location

street & number: South of State Highway 22

not for publication: N/A

city/town: Liberty

vicinity: N/A

state: AR

county: Logan

code: AR 083

zip code: 72835

3. Classification

Ownership of Property: Private

Category of Property: Building

Number of Resources within Property:

Contributing	Noncontributing	
<u>1</u>	<u>      </u>	buildings
<u>      </u>	<u>      </u>	sites
<u>      </u>	<u>      </u>	structures
<u>      </u>	<u>      </u>	objects
<u>1</u>	<u>0</u>	Total

Number of contributing resources previously listed in the National Register: N/A

Name of related multiple property listing: Public Schools in the Arkansas Ozarks, 1920-1940

=====  
**4. State/Federal Agency Certification**  
=====

As the designated authority under the National Historic Preservation Act of 1986, as amended, I hereby certify that this X nomination \_\_\_\_\_ request for determination of eligibility meets the documentation standards for registering properties in the National Register of Historic Places and meets the procedural and professional requirements set forth in 36 CFR Part 60. In my opinion, the property X meets \_\_\_\_\_ does not meet the National Register Criteria. \_\_\_\_\_ See continuation sheet.

Cathryn A. Byrd \_\_\_\_\_ 8-2-92 \_\_\_\_\_  
Signature of certifying official Date

Arkansas Historic Preservation Program \_\_\_\_\_  
State or Federal agency and bureau

In my opinion, the property \_\_\_\_\_ meets \_\_\_\_\_ does not meet the National Register criteria. \_\_\_\_\_ See continuation sheet.

\_\_\_\_\_  
Signature of commenting or other official Date

\_\_\_\_\_  
State or Federal agency and bureau

=====  
**5. National Park Service Certification**  
=====

I, hereby certify that this property is:

- \_\_\_\_\_ entered in the National Register \_\_\_\_\_  
\_\_\_\_\_ See continuation sheet.
- \_\_\_\_\_ determined eligible for the \_\_\_\_\_  
National Register \_\_\_\_\_
- \_\_\_\_\_ See continuation sheet.
- \_\_\_\_\_ determined not eligible for the \_\_\_\_\_  
National Register \_\_\_\_\_
- \_\_\_\_\_ removed from the National Register \_\_\_\_\_
- \_\_\_\_\_ other (explain): \_\_\_\_\_

\_\_\_\_\_  
Signature of Keeper Date  
of Action

=====  
**6. Function or Use**  
=====

Historic: EDUCATION \_\_\_\_\_ Sub: School \_\_\_\_\_

Current: VACANT/NOT IN USE \_\_\_\_\_ Sub: N/A \_\_\_\_\_

=====

**7. Description**

=====

Architectural Classification:

LATE 19TH AND EARLY 20TH CENTURY AMERICAN MOVEMENTS  
Craftsman

Other Description: Plain Traditional

Materials: foundation Stone roof Metal  
walls Stone other Wood columns

Describe present and historic physical appearance. X See continuation sheet.

=====

**8. Statement of Significance**

=====

Certifying official has considered the significance of this property in relation to other properties: Locally.

Applicable National Register Criteria: A

Criteria Considerations (Exceptions): N/A

Areas of Significance: EDUCATION  
\_\_\_\_\_  
\_\_\_\_\_  
\_\_\_\_\_  
\_\_\_\_\_

Period(s) of Significance: 1922-1940

Significant Dates: N/A

Significant Person(s): N/A  
\_\_\_\_\_

Cultural Affiliation: N/A

Architect/Builder: Unknown  
\_\_\_\_\_  
\_\_\_\_\_

State significance of property, and justify criteria, criteria considerations, and areas and periods of significance noted above.  
X See continuation sheet.

=====

**9. Major Bibliographical References**

=====

See "Public Schools in the Arkansas Ozarks, 1920-1940" Multiple Property Form, Section H.

\_\_\_ See continuation sheet.

Previous documentation on file (NPS):

- preliminary determination of individual listing (36 CFR 67) has been requested.
- previously listed in the National Register
- previously determined eligible by the National Register
- designated a National Historic Landmark
- recorded by Historic American Buildings Survey # \_\_\_\_\_
- recorded by Historic American Engineering Record # \_\_\_\_\_

Primary Location of Additional Data:

- X State historic preservation office
- Other state agency
- Federal agency
- Local government
- University
- Other -- Specify Repository: \_\_\_\_\_

=====

**10. Geographical Data**

=====

Acreeage of Property: Less than one

UTM References: Zone Easting Northing      Zone Easting Northing

A	<u>15</u>	<u>467080</u>	<u>3904120</u>	B	___	_____	_____
C	___	_____	_____	D	___	_____	_____

\_\_\_ See continuation sheet.

Verbal Boundary Description: \_\_\_ See continuation sheet.

Beginning at a point formed by the intersection of a line running along the southern edge of State Highway 22 with a perpendicular line running parallel to the building's western elevation and located 50 feet to the west thereof, proceed southerly along said line for a distance of approximately 200 feet to its intersection with a perpendicular line running parallel with the building's southern elevation; thence proceed easterly along said line for a distance of approximately 200 feet to its intersection with a perpendicular line running parallel with the building's eastern elevation; thence proceed northerly along said line for a distance of approximately 200 feet to its intersection with a perpendicular line running along the southern edge of State Highway 22; thence proceed westerly along said line for a distance of approximately 200 feet to the point of beginning.

Boundary Justification: \_\_\_ See continuation sheet.

This boundary includes both the historic resource and all the surrounding property known to have been historically associated therewith that retains its integrity.

=====

**11. Form Prepared By**

=====

Name/Title: Kenneth Story, National Register Coordinator

Organization: Arkansas Historic Preservation Program Date: July 17, 1992

Street & Number: 225 E. Markham, Suite 300 Telephone: (501) 324-9346

City or Town: Little Rock State: AR ZIP: 72201

United States Department of the Interior  
National Park Service

## National Register of Historic Places Continuation Sheet

Section number 7 Page 1

---

### Summary

The New Liberty School is a single story, stone masonry classroom building designed in the Plain Traditional style with certain Craftsman details. Its rectangular plan is relieved by the central entrance porch on the northern or front elevation, which itself is covered with a gable roof with slightly flared eaves, and supported upon two wood columns resting on stone piers. The metal hipped roof and stone walls are supported by a continuous stone foundation.

### Elaboration

The New Liberty School is a single story, stone masonry classroom building designed in the Plain Traditional style with certain Craftsman details. Its rectangular plan is relieved by the central entrance porch on the northern or front elevation, which itself is covered with a gable roof with slightly flared eaves, and supported upon two wood columns resting on stone piers. A small, brick chimney rises through the northern slope of the roof near the center of the building. The metal hipped roof and stone walls are supported by a continuous stone foundation.

The northern elevation or front of the building is symmetrical overall, as it is composed of a pair of central, arched entrances between three window bays to either side. The segmental arch entrances are placed directly beneath the wood porch roof, the pediment of which is lighted with a single, four-pane stationary window, and all of which is supported upon two wooden box columns resting on stone piers. The porch roof flares slightly at its outside edges and is supported by wood knee braces. The windows to either side are all square-headed, and now contain modern aluminum windows. The southern elevation opposite is also symmetrical, though it is lighted only with a single four-over-four wood sash window placed at opposite ends of the elevation.

The eastern and western elevations are also symmetrical, though they are organized around a central, arched window opening that is now filled with a pair of modern windows. The two separate window bays to either side of the central arch are each filled with the same modern windows.

The New Liberty School Building has suffered the replacement of all but its rear windows with new aluminum windows. Otherwise the building appears just as it did when it was constructed. It is in fair condition.

United States Department of the Interior  
National Park Service

## National Register of Historic Places Continuation Sheet

Section number 8 Page 1

---

### New Liberty School

To the west of the tiny railroad town of Delaware in the rolling hills of eastern Logan County lies the smaller community of Liberty, a small congregation of residences and other buildings straddling the Missouri-Pacific railroad track and Arkansas Highway 22. Orchards and the fruit industry were the primary economic mainstays in eastern Logan County during the early 1920's, with stock raising and lumbering also important. Although it lies on the south bank of the Arkansas River and is technically not an Ozark school, the Delaware vicinity fell within the economic orbit of Russellville more so than the rest of Logan County.

Northwest Arkansas was in the middle of a relative economic boom in the early 1920's; pent-up demand exploded following the end of World War I, and the agricultural and timber resources of the region were in demand nationwide. The construction of the New Liberty School in 1922 predates much of the educational financing and reform that would come later in the decade.<sup>1</sup>

The New Liberty School, constructed during the period covered by the historic context *The Evolution of the Public School System in the Arkansas Ozarks, 1920-1940*, is a representative example of a small stone school building constructed for a rural school district. Its use during this period as a local school building clearly identifies it with this historic context and with this property type. It is significant locally under Criterion A through its direct associations with the history of the evolution of the public school system in the Ozark Mountain region of the state during this period.

---

<sup>1</sup>The WPA Guide to 1930's Arkansas (Lawrence, Kansas: University Press of Kansas, 1987), 286.







NEW DICKENS VENDOR  
FERRY, ARIZONA CO, ARIZONA  
PHOTOGRAPHED BY B. DUNSTON-ALLEN  
MAY, 1990  
NEGATIVE ON FILE AT AHPP  
VIEW FROM SOUTH



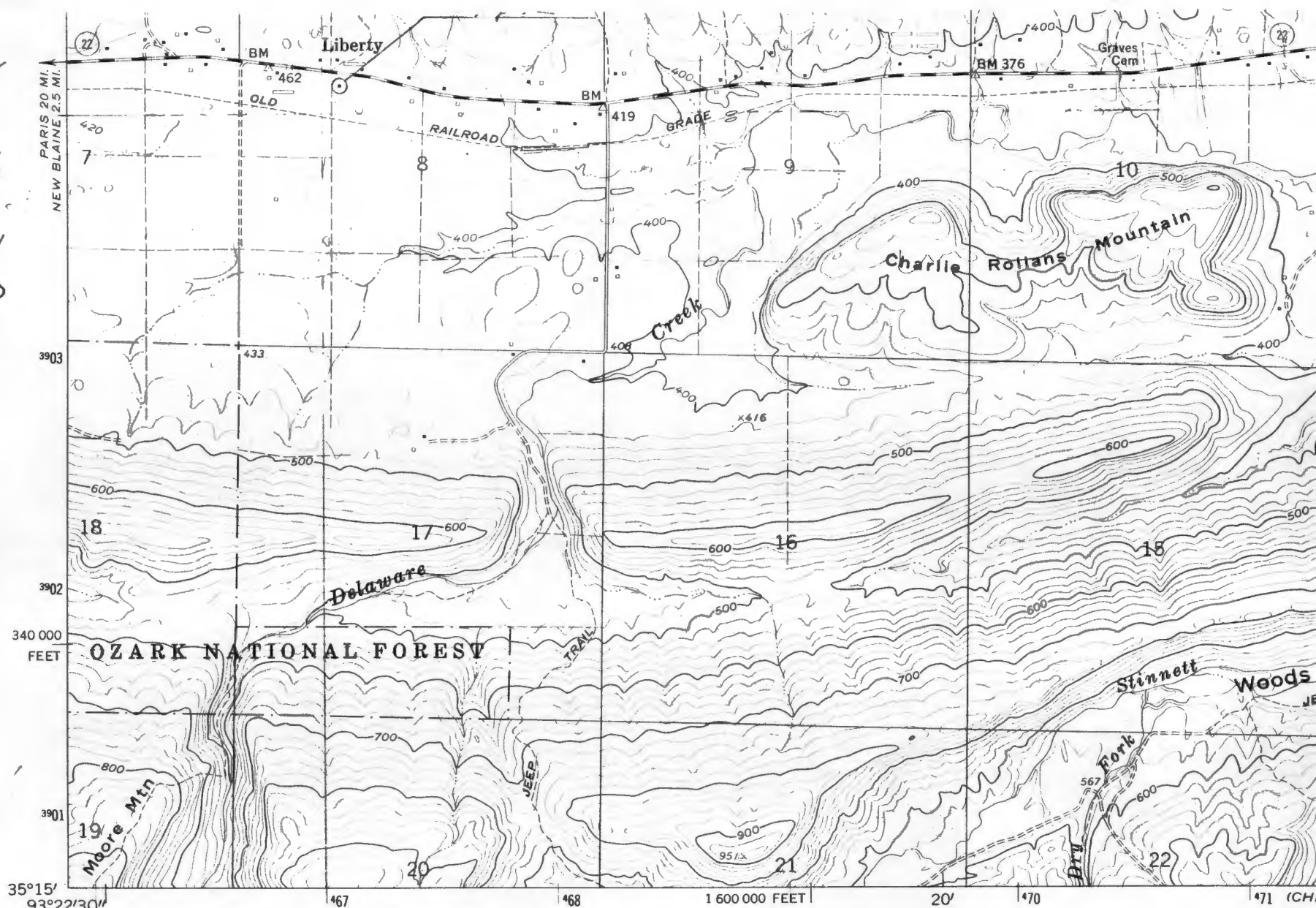
NEW LIBERTY SCHOOL  
DISTRICT, LOGAN Co., ARKANSAS  
PHOTOGRAPHED BY B. DINDSEY-ALLEN  
MAY, 1990  
NEGATIVE ON FILE AT AHPP  
VIEW FROM NORTH

NEW LIBERTY  
SCHOOL

LIBERTY,  
LOGGING

5,467080/  
3904120

200042



Mapped, edited, and published by the Geological Survey

Control by USGS, USC&GS, and USCE

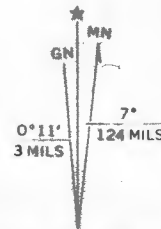
Topography by photogrammetric methods from aerial photographs taken 1958. Field checked 1962

Polyconic projection. 1927 North American datum  
10,000-foot grid based on Arkansas coordinate system, north zone  
1000-metre Universal Transverse Mercator grid ticks,  
zone 15, shown in blue

Blue hatching indicates areas to be submerged  
by Dardanelle Reservoir

Fine red dashed lines indicate selected fence and field lines where  
generally visible on aerial photographs. This information is unchecked

CHICKALAH MTN. WEST  
7354 III NW



UTM GRID AND 1962 MAGNETIC NORTH  
DECLINATION AT CENTER OF SHEET



CONT  
NATIONAL GEO

THIS MAP COMPLIES WITH  
FOR SALE BY U.S. GEOLOGICAL SURVEY