

HISTORIC RESOURCES OF STONE COUNTY
STONE COUNTY, ARKANSAS

ARKANSAS HISTORIC PRESERVATION PROGRAM

Survey Number ST-92
Property Name Lackey General Merchandise
and Warehouse

Owner Mr. Guy Lackey

Address P.O. Box K

Location Mountain View

Mountain View, AR 72560

Significant Date/s 1924

ARCHITECTURAL DESCRIPTION

Anchoring the east side of Mountain View's courthouse square, the Lackey General Merchandise and Warehouse is one of two structures that approach the mass and scale of the Stone County Courthouse (NR-1976). Bill Laroe, the stone mason on the 1922 courthouse, built the Lackey Building in 1924. The two story stone structure is built on a rectangular plan and covered by a flat roof with a low parapet.

Its principal facade faces west onto the courthouse square. The first story features two large stationary display windows with multi-light transoms and a metal awning that wraps around the building to the south. The awning is not original. It replaced a wood frame awning covered with sheet metal. The second story elevation exhibits four six-over-one double-hung windows, symmetrically arranged just above the awning.

Situated diagonally to the street corner, the building's main entrance is distinguished by a free standing dressed stone column that makes the transition from the west elevation to the south street facade. It also creates separate street accesses from the west and south. The double door entry is not original to the building.

The south elevation exhibits a single large stationary display window with a multi-light transom and an asymmetrically designed secondary storefront with a single door and stationary display window setting. A wooden awning covers the door and window. This south entrance provided access to the grocery area of the building. The second story is marked by a fenestration of six double-hung windows. Half of the windows are original six-over-one, while the remaining are made of modern aluminum framing.

The north and east elevation are solid stone masses butted against the surrounding structures. The elevations of the building are finished with a dressed stone entablature capped with a narrow stone cornice.

STATEMENT OF SIGNIFICANCE

Anchoring the east side of Mountain View's courthouse square, the Lackey General Merchandise and Warehouse housed the largest merchandize business in Stone County. The two-story store building sits on the corner east of the courthouse. It is one of two structures that approach the mass and scale of the Stone County Courthouse. The Lackey Building was built in 1924 by Bill Laroe, a local stone mason who built the Stone County Courthouse in 1922, and was also responsible for other commercial stone buildings along the court square in Mountain View.

Verbal Boundary Description: Lot 6 of the County Addition.

Acreage: less than 1

Quadrangle Name: Mountain View

Quadrangle Scale: 1:24000

UTM Reference:

Zone: 15

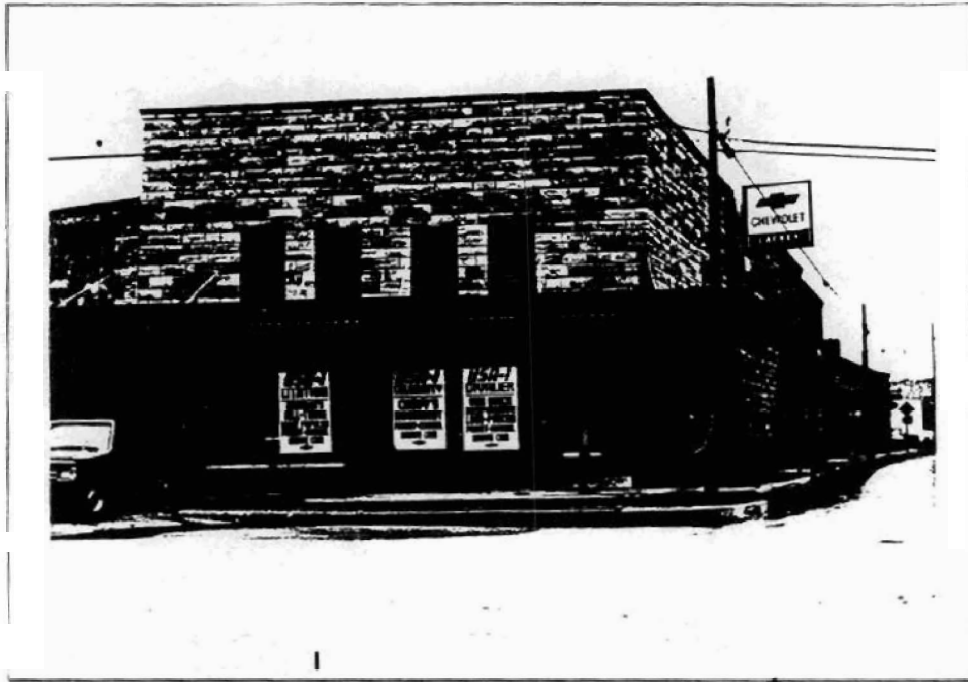
Easting: 579660

Northing: 3969540

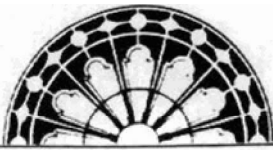


ARKANSAS
HISTORIC
PRESERVATION
PROGRAM

RESOURCE PHOTOGRAPH SHEET

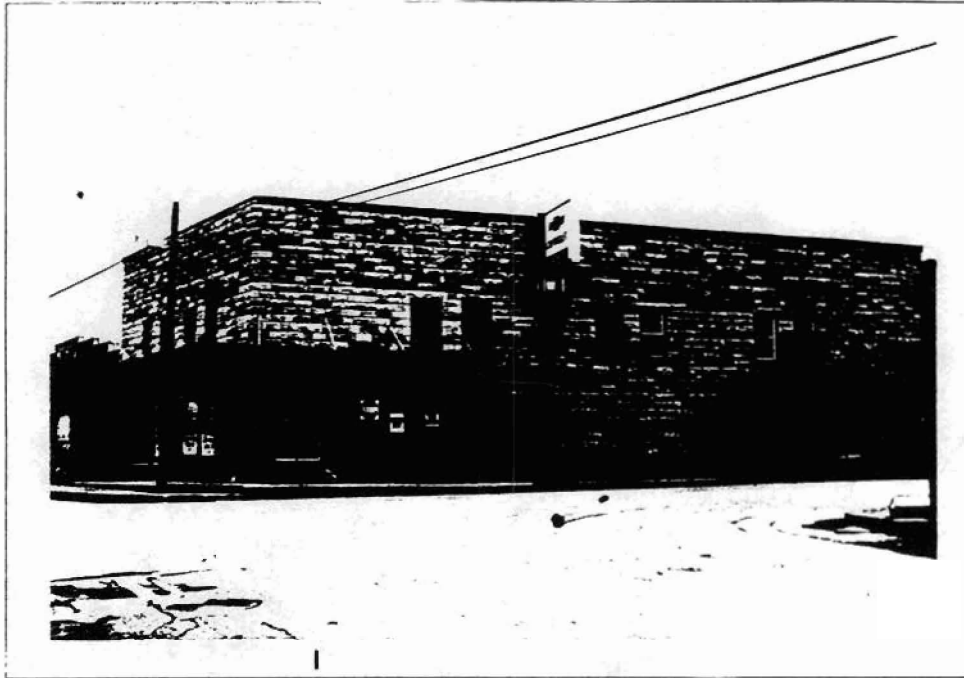


Historic Resources of Stone County
Lackey General Merchandise & Warehouse, ST-92
Mountain View
Don Brown, photographer
1983
Negative on file at the AHPP
Viewed from the west



RESOURCE PHOTOGRAPH SHEET

ARKANSAS
HISTORIC
PRESERVATION
PROGRAM



Historic Resources of Stone County
Lackey General Merchandise & Warehouse, ST-92
Mountain View
Don Brown, photographer
1983
Negative on file at the AHPP
Viewed from the southwest