

HISTORIC RESOURCES OF STONE COUNTY
STONE COUNTY, ARKANSAS

ARKANSAS HISTORIC PRESERVATION PROGRAM

Survey Number ST-146

Owner Mr. Hugh Williams

Property Name Fred Lancaster Barn

Address Route 71, Box 490

Location Round Bottom

Mountain View, AR 72560

Significant Date/s c.1918

ARCHITECTURAL DESCRIPTION

The c. 1918 Fred Lancaster Barn is situated on the first bench mark above the White River bottomlands in an area of northeast Stone County known as Round Bottom. The log barn, built on a four crib plan, sits on stack stone piers and is covered by a gable roof. The four cribs, measuring 12' x 20', were divided by cross driveways. Since its construction, the east-west driveway has been enclosed by vertical boards leaving the north-south open driveway between the cribs.

The cribs are capped by a large loft area. Except for the square loft opening and the four-light window opening set in the apex of the gable end, the barn's front gable end is made of a solid vertical board mass. The south (rear), east and west elevations reflect the solid mass of the barn's building materials. The rear elevation displays a solid vertical board gable end. The east and west sides features solid log wall and vertical board infilling.

STATEMENT OF SIGNIFICANCE

The Fred Lancaster Barn is a fine example of a log four crib barn. Built in 1918 on an original four crib plan with intersecting driveways, Lancaster later enclosed the driveway running perpendicular to the ridge pole to create more functional space. The barn is a valuable resource in understanding the evolution from the traditional crib plan to the transverse crib barn plan. It is located at Round Bottom along the White River in eastern Stone County.

Verbal Boundary Description: The nominated property, located within the NE $\frac{1}{4}$ of the NE $\frac{1}{4}$ of S16, R10W, T15N, is bounded on the north, south, east and west by lines running parallel to and 100' from the four major facades of the barn.

Acreage: less than 1
Quadrangle Name: Sylamore

Quadrangle Scale: 1:24000

UTM Reference:
Zone: 15

Easting: 586060

Northing: 3977350



RESOURCE PHOTOGRAPH SHEET

ARKANSAS
HISTORIC
PRESERVATION
PROGRAM



Historic Resources of Stone County

Fred Lancaster Barn, ST-146

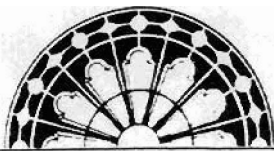
Round Bottom

Don Brown, photographer

1983

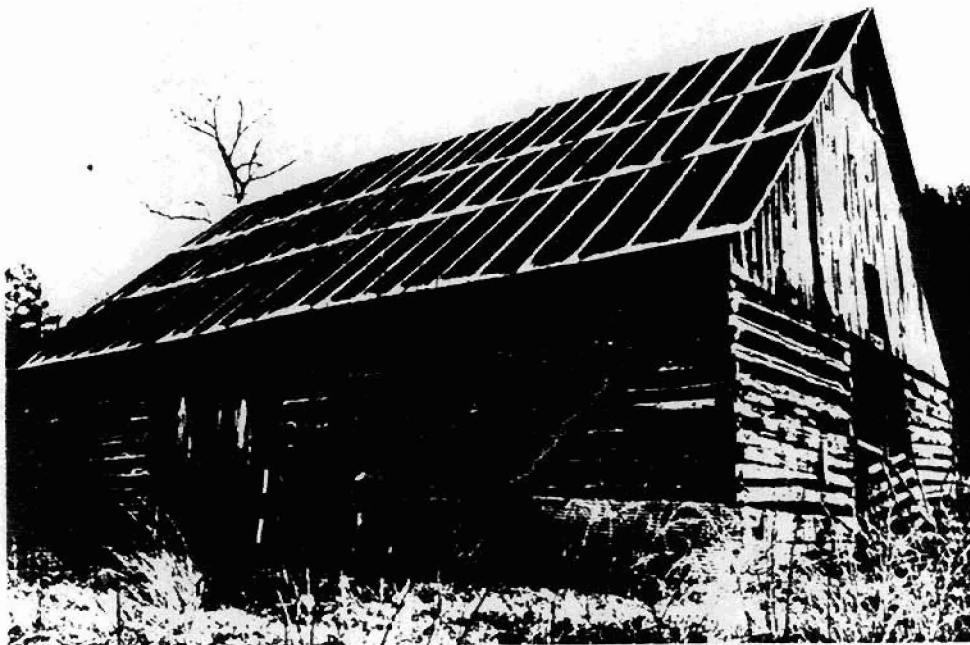
Negative on file at the AHPP

Viewed from the northwest



RESOURCE PHOTOGRAPH SHEET

ARKANSAS
HISTORIC
PRESERVATION
PROGRAM



Historic Resources of Stone County
Fred Lancaster Barn, ST-146
Round Bottom
Don Brown, photographer
1983
Negative on file at the AHPP
Viewed from the east