

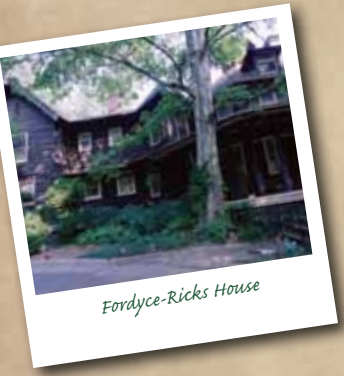
2010 Walks Through History

What: Walks through History Tours
Where: Historic sites around Arkansas
When: Saturdays from 11:00 a.m. until 1:00 p.m.
Who: Free and open to the public



Pocahontas Commercial Historic District

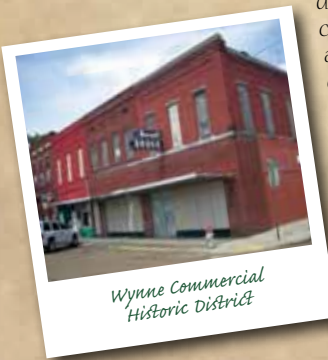
March 13, 2010: Pocahontas Commercial Historic District. With the Italianate-style Randolph County Courthouse as its centerpiece, the Pocahontas Commercial Historic District represents the commercial development of the county seat. Because of its location on the banks of the Black River, Pocahontas became an important trading and distribution hub in northeast Arkansas and southeast Missouri by the mid-nineteenth century. The buildings within the district boundary are good examples of late nineteenth and early twentieth century commercial-style architecture as well. The tour group will meet at the Randolph Music Theater at 302 N. Marr St. Co-sponsored by Five Rivers Historic Preservation, Inc., and the Randolph County Tourism Association.



Fordyce-Ricks House

April 17, 2010: Fordyce-Ricks House Historic District at 1501 Park Ave. in Hot Springs. Constructed between 1904 and 1909 as a retirement home for railroad mogul and Hot Springs entrepreneur Samuel W. Fordyce, the Fordyce-Ricks House is the most substantial building in the district. This 12-room, 4,338 square-foot home was constructed with logs and designed in the Rustic, Adirondack style. The house was sold in 1937 to General Earl T. Ricks, who was adjutant general of the Arkansas National Guard, mayor of Hot Springs, and an American Aviation Hall of Fame inductee. The house remains the best example of the Rustic style in Hot Springs. Co-sponsored by the Garland County Historical Society.

May 15, 2010: Wynne Commercial Historic District. Wynne became an important commercial center around the turn of the twentieth century because of its unique position at the intersection of the north-south and east-west branches of the St. Louis, Iron Mountain & Southern Railroad. As a result of this growth, the Cross County seat was moved in 1903 from Vanndale to Wynne, where it remains today. The district also contains a good collection of late nineteenth and early twentieth century commercial-style buildings, which serve as a reminder of the town's importance to the surrounding county. The tour group will meet at the corner of Front St. and Merriman Ave. Co-sponsored by the Cross County Historical Society.



Wynne Commercial Historic District

June 12, 2010: Mammoth Spring Dam and Lake. Constructed in 1887-88 by the Mammoth Spring Improvement and Water Power Company, the Mammoth Spring Dam powered the Mammoth Spring Roller Mill and Elevator, which ground soft wheat into flour, and the Mammoth Spring Cotton Mill and Cotton Gin. The construction of the dam spurred industrial and commercial growth in the sparsely populated area known as "Head of the River," ultimately leading to the incorporation of the town of Mammoth Spring. After the Arkansas-Missouri Power Company purchased the Mammoth Spring Dam in 1925, the south turbine well was retrofitted to produce hydropower. The Arkansas-Missouri Power Company operated the Mammoth Spring Power Plant until 1972, when it became uneconomical to maintain the small station. The power company then donated the dam and powerhouse to Arkansas State Parks, and the Mammoth Spring State Park was established in 1957. The tour group will meet at the Information Center. Co-sponsored by Mammoth Spring State Park and the Mammoth Spring Chamber of Commerce.



Mammoth Spring Dam



Austin Pangburn House

These homes were constructed quickly and inexpensively to accommodate rapid population growth during the late nineteenth and early twentieth centuries. The tour group will meet at the corner of Main and Searcy streets. Co-sponsored by the White County Historical Society.

July 17, 2010: Historic Pangburn. Located in northwestern White County, Pangburn grew up along the banks of the Little Red River. The small town of Pangburn boasts several National Register-listed houses designed in various vernacular styles popular during the Railroad Era.

August 14, 2010: Rector Commercial Historic District. The northeast Arkansas town of Rector was platted in 1882 along the St. Louis and Texas Railroad. Rector grew rapidly as a result of the railroad, the timber industry, and later, cotton. The buildings in downtown Rector retain much of their historic integrity, including several with cast iron storefronts. These storefronts were manufactured by the Mesker Brothers Company of St. Louis beginning in 1879. The tour group will meet in Rector Downtown Central Park at the intersection of S. Main and Front streets. Co-sponsored by Rector Downtown Central.



Rector Commercial Historic District



Arkansas County Courthouse, Southern District

September 18, 2010: DeWitt Commercial Historic District. DeWitt, one of two county seats in the state's first county, Arkansas County, grew slowly until 1891 when a spur of the St. Louis and Southwest Railroad extended its tracks through the town. The railroad provided transportation for prairie-grown hay, livestock, timber, cotton, and later, rice. The district's collection of early twentieth century commercial-style buildings reflects DeWitt's role as a center of commerce in Arkansas County. The tour group will meet in front of the 1931 Art Deco-style Arkansas County Courthouse on DeWitt's Court Square. Co-sponsored by the Grand Prairie Historical Society.



Calhoun County Courthouse

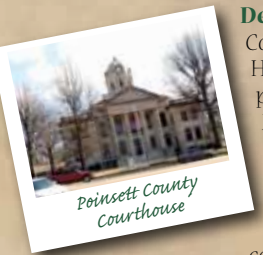
Calhoun County in 1883 lessened Hampton's commercial importance, the county seat grew steadily. Because of its location along the main thoroughfare between Little Rock and El Dorado, the town remains an important asset for the surrounding county. Of particular interest is the National Register-listed Hampton Cemetery, which includes the graves of survivors of the Mountain Meadows Massacre. The tour group will meet in front of the Calhoun County Courthouse. Co-sponsored by the Hampton Cemetery Committee.

October 9, 2010: Historic Hampton. The timber industry has always been important in Hampton, harvesting Calhoun County's extensive forests of short leaf yellow pine, cypress, oak, red gum, and hickory. Although the completion of the St. Louis, Arkansas & Texas Railroad through northern

November 13, 2010: Shaheen-Goodfellow Weekend Cottage, or "Stoneflower," at 704 Stony Ridge Rd. on Eden Isle (near Heber Springs in Cleburne County). "Stoneflower" was designed by one of Arkansas's most celebrated architects, E. Fay Jones. Completed in 1965 on a lot overlooking Greers Ferry Lake, this house foreshadowed Jones's design for the building that would bring him international acclaim—Thorncrown Chapel in Eureka Springs. "Stoneflower" is exactly half the size of Thorncrown Chapel and utilizes the same elaborate succession of 2 x 4' cross braces to support the upper story's tall walls and high ceiling. Intimately integrated with its environment, "Stoneflower" exhibits the principles of organic architecture followed by Jones throughout his career. Co-sponsored by the Cleburne County Historical Society.



Shaheen-Goodfellow Weekend Cottage



Poinsett County Courthouse

December 11, 2010: Harrisburg Commercial Historic District. Harrisburg, the Poinsett County seat, prospered when the St. Louis, Iron Mountain & Southern Railroad was completed through the town in 1882. The railroad provided transportation for timber and later, cotton and rice. The historic commercial buildings on Harrisburg's courthouse square date to the late nineteenth and early twentieth centuries and reflect the town's greatest period of growth. The tour group will meet in front of the Poinsett County Courthouse. Co-sponsored by the Sunken Lands Regional Chamber of Commerce.



TOURS



sandwiching in History



Walks Through History



ARKANSAS HISTORIC PRESERVATION PROGRAM
 An Agency of the Department of Arkansas Heritage

2010 Sandwiching in History Tours

What: Sandwiching in History Tours
Where: Historic sites in central Arkansas
When: Fridays from noon until 1:00 p.m.
Who: Free and open to the public



Trinity Hospital

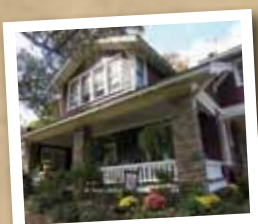
January 8, 2010: Trinity Hospital at 2000 S. Main St. in Little Rock. Trinity Hospital was incorporated in 1924 by Little Rock Doctors Orange King Judd, Mahlon Dickerson Ogden, Augustine Mathias Zell, James Isaac Scarborough, and Robert Booth Moore. The new hospital building was designed by noted architect Max F. Mayer. In the early 1930s, Trinity Hospital started the first prepayment medical plan, or the forerunner of today's health maintenance organizations (HMOs), in Arkansas. By instituting this controversial plan, the hospital offered affordable medical care to a cross section of the community.



Robert E. Lee School

February 5, 2010: Robert E. Lee School at 3805 W. 12th St. in Little Rock. The Robert E. Lee School was constructed in 1906-1907 to house the growing number of white students in Little Rock's West End neighborhoods. The school was designed in a simplified version of the Tudor Revival style by the Little Rock architectural firm of Gibb & Sanders. Although the school was closed in 1971, the building currently serves an integral role in the community as the Willie L. Hinton Neighborhood Resource Center.

March 5, 2010: Dr. Morgan Smith House at 5110 Stagecoach Rd. in Little Rock. Built in 1918 for well-respected and successful physician Dr. Morgan Smith, this house is an excellent example of the Craftsman style in southwest Little Rock. Dr. Smith played a vitally important role in the evolution of the medical profession in Arkansas, serving as Dean of the Medical School and State Health Officer in the early twentieth century. This house on Stagecoach Road served as both Dr. Smith's personal residence and the office for his medical practice.



Dr. Morgan Smith House



First Presbyterian Church, North Little Rock

April 9, 2010: First Presbyterian Church at 201 W. 4th St. in North Little Rock. Located in the Argenta Historic District, the First Presbyterian Church of North Little Rock has experienced growth as a result of renewed interest in the downtown area. The church sanctuary was designed in 1954 by well-known Arkansas architect John Parks Almand in a simplified version of the Gothic Revival style. The interior of the sanctuary features the lavish use of dark woods and stained glass.

May 7, 2010: Reichardt House at 1201 Welch St. in Little Rock. Originally constructed around 1870, this house has had several Folk Victorian-style additions, including the final addition of a second story about 1890. The house was purchased by German immigrant Edward Reichardt in 1874 after he had made a name for himself in the merchandising and cotton trading business. Reichardt even owned part interest in Little Rock's first street railway system as well as a railroad bridge across the Arkansas River at Little Rock.



Reichardt House



Street Building

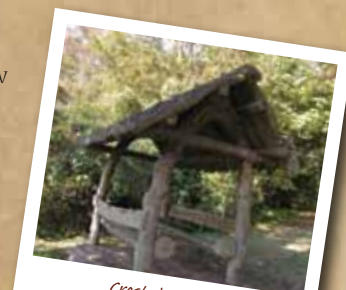
June 4, 2010: Street Building at 417-419 Main St. in North Little Rock. The Street Building was expanded in 1895, and the present façade was built at that time. Pharmacist George M. Street initially owned the building, but it has served as a meeting place for the Elks Lodge, the North Little Rock Boys Club, and the American Legion. The Street Building is an excellent example of the Italianate style in the Argenta Historic District with its decorative cornice, L-shaped brackets, and hood molding over the windows. It currently houses an art studio and offices on its lower floors, and the upper floor has been converted into a residence.



Matthews House

July 9, 2010: Matthews House at 406 Goshen Ave. in North Little Rock. The Matthews House was constructed in 1928 by the Justin Matthews Company as a show house in the Park Hill subdivision. The house remained open for public viewing from 1928 to 1932, and during that time, it was toured by an estimated 28,000 people. The company's architect, Frank Carmean, created the extraordinarily "modernistic" house by combining elements of the International and Art Deco styles.

August 6, 2010: Crestview Park at the intersection of Crestview Dr. and Cherry Hill Ave. in North Little Rock. Parking is available on nearby streets, and for those who cannot walk stairs, limited parking is available behind the Travelodge on N. Main St. Park Hill developer Justin Matthews commissioned Mexican sculptor Dionicio Rodriguez to design his famous "faux bois" sculptures in Crestview Park in the early 1930s. While he is better known for his work at the Old Mill, Rodriguez created two concrete sculptures for this little-known park, including a front-gabled rustic shelter, which is unique to this site. Be sure to pack a lunch for this outdoor tour!



Crestview Park



First Lutheran Church

September 10, 2010: First Lutheran Church at 314 E. 8th St. in Little Rock. Located in the MacArthur Park Historic District, First Lutheran Church is an excellent example of the Gothic Revival style in downtown Little Rock. Completed in 1888, this building replaced a wood-frame church constructed on this site about 1870 by the Lutheran congregation. The First Lutheran Church was designed by Little Rock architect Thomas Harding. In 1926 a layer of buff brick was laid over the original red brick exterior, making the walls 14 inches thick with the exception of the west (or rear) wall, which is still faced in red brick under several coats of paint.



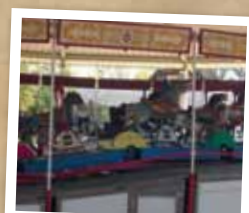
Oakland-Fraternal Cemetery

October 1, 2010: Oakland-Fraternal Cemetery in Little Rock. Enter the cemetery at the gate on Barber St. between E. 17th St. and Booker Arts Magnet Elementary School. We will meet at the intersection of Veterans Blvd. and Main St. inside the cemetery. In 1862 the City of Little Rock purchased the Starbuck Estate in southeast Little Rock for use as a public cemetery due to concerns over private burials in the city limits, overcrowding at Mount Holly Cemetery, and the increasing number of soldiers dying in Little Rock's hospitals during the Civil War. This land became Oakland-Fraternal Cemetery, which now contains over 10,000 monuments and sculptures on its 92 acres. The cemetery is representative of Little Rock's social fabric—interring immigrants, African Americans, paupers, religious and non-religious people—potentially revealing more about the City of Little Rock than many written histories.

November 5, 2010: Melrose Place Addition in North Little Rock. Meet in front of 108 Melrose Circle. Located in the northwest corner of the Argenta Historic District, the Melrose Place Addition was platted in 1924 by Twin City Bank. The bank constructed 53 small Craftsman bungalow houses in the addition between 1925 and 1929. These homes feature similar plans and were historically occupied by railroad employees. The Melrose Place Addition is the only deviation from the traditional street grid pattern in Argenta. We will discuss the similarities between houses and take a look inside the house at 108 Melrose Circle.



Craftsman Bungalow at 108 Melrose Circle



Herschell-Spillman Carousel

December 3, 2010: Herschell-Spillman Carousel at the Little Rock Zoo. The Herschell-Spillman, or "Over the Jumps," Carousel consists of forty hand-carved wooden horses made in the 1920s by three of carousel manufacturer Allan Herschell's companies. Herschell was one of the first carousel manufacturers in the United States, opening his first factory in 1873 in New York. Hand-carved and painted carousel horses are rare today, and "Over the Jumps" represents a unique, intact example of this art form.



ARKANSAS HISTORIC PRESERVATION PROGRAM
An Agency of the Department of Arkansas Heritage

1500 Tower Bldg., 323 Center Street
Little Rock, AR 72201
Telephone: (501) 324-9880
E-mail: info@arkansaspreservation.org
Website: www.arkansaspreservation.org