

NR Listed: 7-11-02

United States Department of the Interior  
National Park Service

National Register of Historic Places  
Registration Form

This form is for use in nominating or requesting determinations for individual properties and districts. See instructions in *How to Complete the National Register of Historic Places Registration Form* (National Register Bulletin 16A). Complete each item by marking "x" in the appropriate box or by entering the information requested. If an item does not apply to the property being documented, enter "N/A" for "not applicable." For functions, architectural classification, materials, and areas of significance, enter only categories and subcategories from the instructions. Place additional entries and narrative items on continuation sheets (NPS Form 10-900a). Use a typewriter, word processor, or computer, to complete all items.

1. Name of Property

historic name Main Street Bridge  
other names/site number New Blaine-3

2. Location

street & number Sellars Street at the crossing of Silver Smith Branch  not for publication  
city or town New Blaine  vicinity  
state Arkansas code AR county Logan County code 083 zip code 72851

3. State/Federal Agency Certification

As the designated authority under the National Historic Preservation Act, as amended, I hereby certify that this  nomination   
request for determination of eligibility meets the documentation standards for registering properties in the National Register of Historic  
Places and meets the procedural and professional requirements set for in 36 CFR Part 60. In my opinion, the property  meets   
does not meet the National Register criteria. I recommend that this property be considered significant  
 nationally  statewide  locally. (See continuation sheet for additional comments.)

Corbie Matthews 5/13/02  
Signature of certifying official/Title Date  
Arkansas Historic Preservation Program  
State or Federal agency and bureau

In my opinion, the property  meets  does not meet the National Register criteria.  See Continuation sheet for additional comments.)

\_\_\_\_\_  
Signature of certifying official/Title Date  
\_\_\_\_\_  
State or Federal agency and bureau

4. National Park Service Certification

I hereby certify that the property is:

- entered in the National Register.  
 See continuation sheet
- determined eligible for the National Register.  
 See continuation sheet
- determined not eligible for the National Register.
- removed from the National Register.
- other, (explain:) \_\_\_\_\_

Signature of the Keeper

Date of Action

\_\_\_\_\_  
\_\_\_\_\_  
\_\_\_\_\_  
\_\_\_\_\_

Main Street Bridge  
Name of Property

Logan County, Arkansas  
County and State

**5. Classification**

**Ownership of Property**  
(Check as many boxes as apply)

- private
- public-local
- public-State
- public-Federal

**Category of Property**  
(Check only one box)

- building(s)
- district
- site
- structure
- object

**Number of Resources within Property**  
(Do not include previously listed resources in count.)

Contributing	Noncontributing	
0	0	buildings
0	0	sites
1	0	structures
0	0	objects
1	0	Total

**Name of related multiple property listing**  
(Enter "N/A" if property is not part of a multiple property listing.)

Historic and Architectural Resources of New Blaine,  
Arkansas

**Number of Contributing resources previously listed  
in the National Register**

N/A

**6. Function or Use**

**Historic Functions**  
(Enter categories from instructions)

TRANSPORTATION: Road-related

**Current Functions**  
(Enter categories from instructions)

TRANSPORTATION: Road-related

**7. Description**

**Architectural Classification**  
(Enter categories from instructions)

OTHER: Masonry closed spandrel arch

**Materials**  
(Enter categories from instructions)

foundation Stone

walls Stone

roof N/A

other Dirt over stone

**Narrative Description**

(Describe the historic and current condition of the property on one or more continuation sheets.)

8. Statement of Significance

Applicable National Register Criteria

Mark "x" in one or more boxes for the criteria qualifying the property National Register listing.)

- A Property is associated with events that have made a significant contribution to the broad patterns of our history.
B Property is associated with the lives of persons significant in our past.
C Property embodies the distinctive characteristics of a type, period, or method of construction or represents the work of a master, or possesses high artistic values, or represents a significant and distinguishable entity whose components lack individual distinction.
D Property has yielded, or is likely to yield, information important in prehistory or history.

Criteria Considerations

(Mark "x" in all the boxes that apply.)

Property is:

- A owned by a religious institution or used for religious purposes.
B removed from its original location.
C birthplace or grave of a historical figure of outstanding importance.
D a cemetery.
E a reconstructed building, object, or structure.
F a commemorative property
G less than 50 years of age or achieved significance within the past 50 years.

Levels of Significance (local, state, national)

Local

Areas of Significance (Enter categories from instructions)

ENGINEERING

Period of Significance

1922

Significant Dates

1922

Significant Person (Complete if Criterion B is marked)

N/A

Cultural Affiliation (Complete if Criterion D is marked)

N/A

Architect/Builder

Moore, Aaron- Foreman

Lasater, Freeborn T. and Steve Robinson- Laborers

Narrative Statement of Significance

(Explain the significance of the property on one or more continuation sheets.)

9. Major Bibliographical References

Bibliography

(Cite the books, articles, and other sources used in preparing this form on one or more continuation sheets.)

Previous documentation on file (NPS):

- preliminary determination of individual listing (36 CFR 67) has been requested
previously listed in the National Register
Previously determined eligible by the National Register
designated a National Historic Landmark
recorded by Historic American Buildings Survey
recorded by Historic American Engineering

Primary location of additional data:

- State Historic Preservation Office
Other State Agency
Federal Agency
Local Government
University
Other

Name of repository:



United States Department of the Interior  
National Park Service

# National Register of Historic Places Continuation Sheet

Section number 7 Page 1

---

## DESCRIPTION

Located on Sellars Street, formerly Main Street, at the point where it crosses the Silver Smith Branch, the Main Street Bridge is of the closed-spandrel stone-masonry arch type. The bridge is a single span bridge constructed of locally quarried stone. The bridge's total length is 19 feet with a width of approximately 20 feet. The arch is constructed entirely of stone, as is the deck with its dirt and gravel surface. The bridge was constructed in two sections, with the south portion being completed first. The bridge has not been altered since its construction in 1922.

United States Department of the Interior  
National Park Service

## National Register of Historic Places Continuation Sheet

Section number 8 Page 1

### SUMMARY

Constructed in 1922, the Main Street Bridge over Silver Smith Branch in New Blaine, Arkansas, is being nominated to the National Register of Historic Places with **local significance** under **Criterion C** as the best example of a stone masonry bridge in the town and surrounding area. It is being submitted under the multiple property listing "**Architectural Resources of New Blaine, Arkansas**" in conjunction with the historic context "**History and Architecture of New Blaine, Arkansas: 1920-1940**".

### ELABORATION

The Main Street Bridge is located on Sellars Street in New Blaine, Arkansas. The bridge spans Silver Smith Branch. The branch gets its name from a gentleman named Smith who came to the area to prospect for silver. After having some luck in the branch's water, he set up a small business selling silver bracelets and spoons. The branch took on the name Silver Smith Branch after Mr. Smith started his business.

When the bridge was built Sellars Street was Main Street, hence the bridge's name. The bridge was built in 1922 as the town of New Blaine was beginning to flourish. A wood bridge had crossed Silver Smith Branch, but as the commercial area began to thrive with the arrival of the railroad, the townspeople saw the need for a more durable bridge to handle the increased flow of people and goods to and from the depot.

Local stonemasons Steve Robinson and Freeborn Lasater constructed the bridge under the supervision of Aaron Moore. The bridge was constructed in two phases. The south half was completed first, then the wood bridge was removed and the north half of the stone bridge was then completed. The bridge was the primary route of entry into the town's commercial area and depot.

The bridge has continuously been used since its construction in 1922. It has survived both time and nature. In 1927 the railroad was disabled when floodwaters destroyed the nearby trestle. The stone bridge was unharmed by the raging waters.

Today, the Logan County Road Department maintains the bridge. Although traffic over the bridge has dramatically decreased since the town's heyday in the 1920s, the bridge still performs a vital task to those who live in the former commercial area of New Blaine.

### Statement of Significance

Constructed in 1922, the Main Street Bridge over Silver Smith Branch in New Blaine, Arkansas, is being nominated to the National Register of Historic Places with **local significance** under **Criterion C** as the best example of a stone masonry bridge in the town and surrounding area. It is being submitted under the multiple property listing "**Architectural Resources of New Blaine, Arkansas**" in conjunction with the historic context "**History and Architecture of New Blaine, Arkansas: 1920-1940**".

Main Street Bridge

Name of Property

Logan County, Arkansas

County and State

United States Department of the Interior  
National Park Service

# National Register of Historic Places Continuation Sheet

Section number 9 Page 1

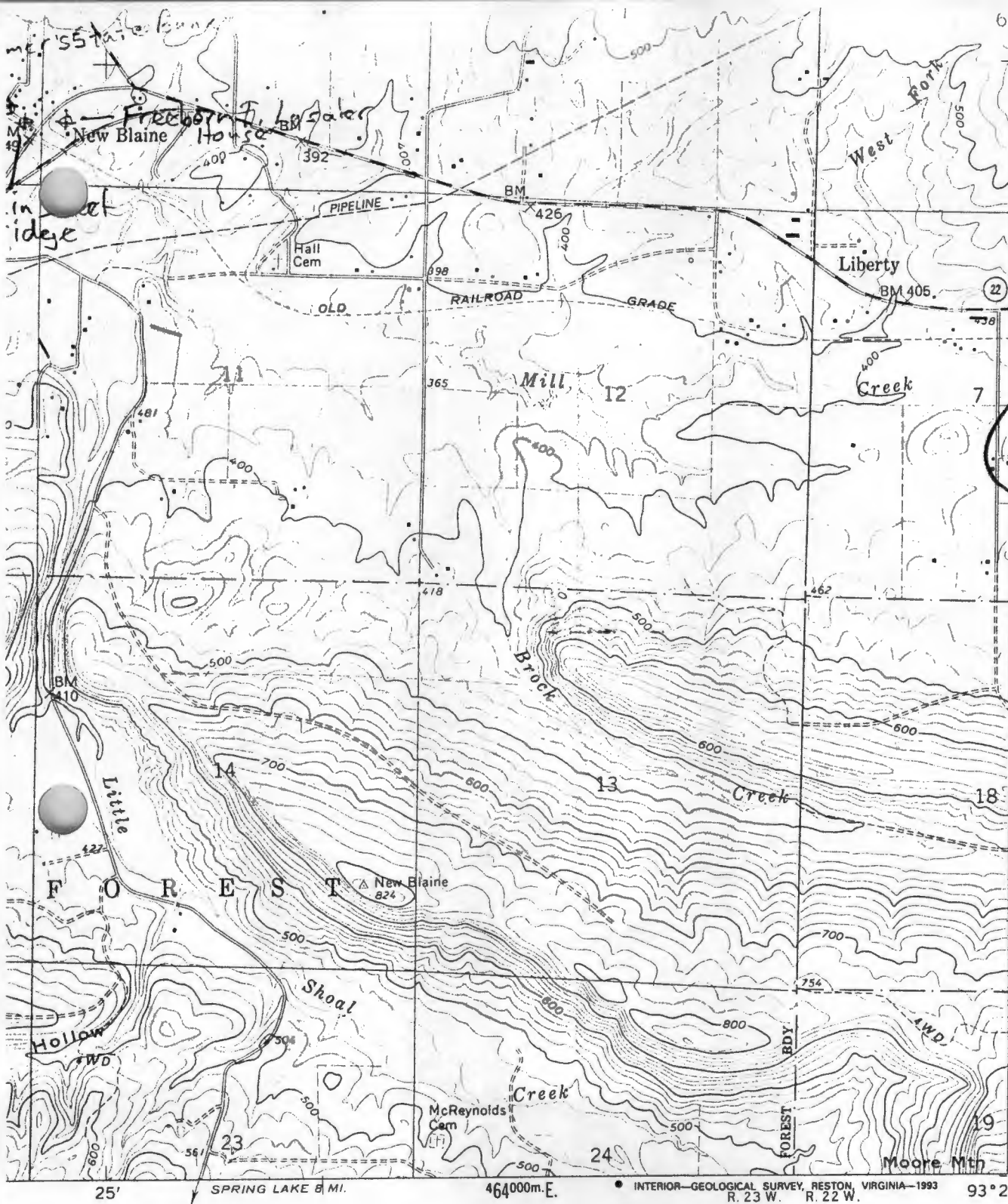
---

## Bibliography

Lane, Ratha Burnham. Interview with Zac Cothren. January 2002.

Gehring, Mary Wood and Ratha Burnham Lane. Remembering....Shoal Creek, Blaine, New Blaine, Harkey's Valley, River Mountain, Pin Hook, Liberty, New Liberty, and Delaware in Logan County, Arkansas. 1997.





New Blaine  
Logan Cay

Farmer's Sh  
Bank

UTM: 15/4617IV  
3905093

Main Street  
Bridge  
UTM: 15/4617  
390494

Freeborn T. Lasa  
House:

UTM: 15/461  
39050

17'30"  
3905  
DELAWARE 4.2 MI.  
DARDANELLE 17 MI.  
3904  
7  
3903  
3902  
3901000m.N.  
135°15'

25'

SPRING LAKE 8 MI.

464000m.E.

INTERIOR—GEOLOGICAL SURVEY, RESTON, VIRGINIA—1993  
R. 23 W. R. 22 W.

93°22'30"

ROAD CLASSIFICATION

- Primary highway, hard surface
- Secondary highway, hard surface
- Light-duty road, hard or improved surface
- Unimproved road
- Interstate Route
- U. S. Route
- State Route

1 MILE



QUADRANGLE LOCATION

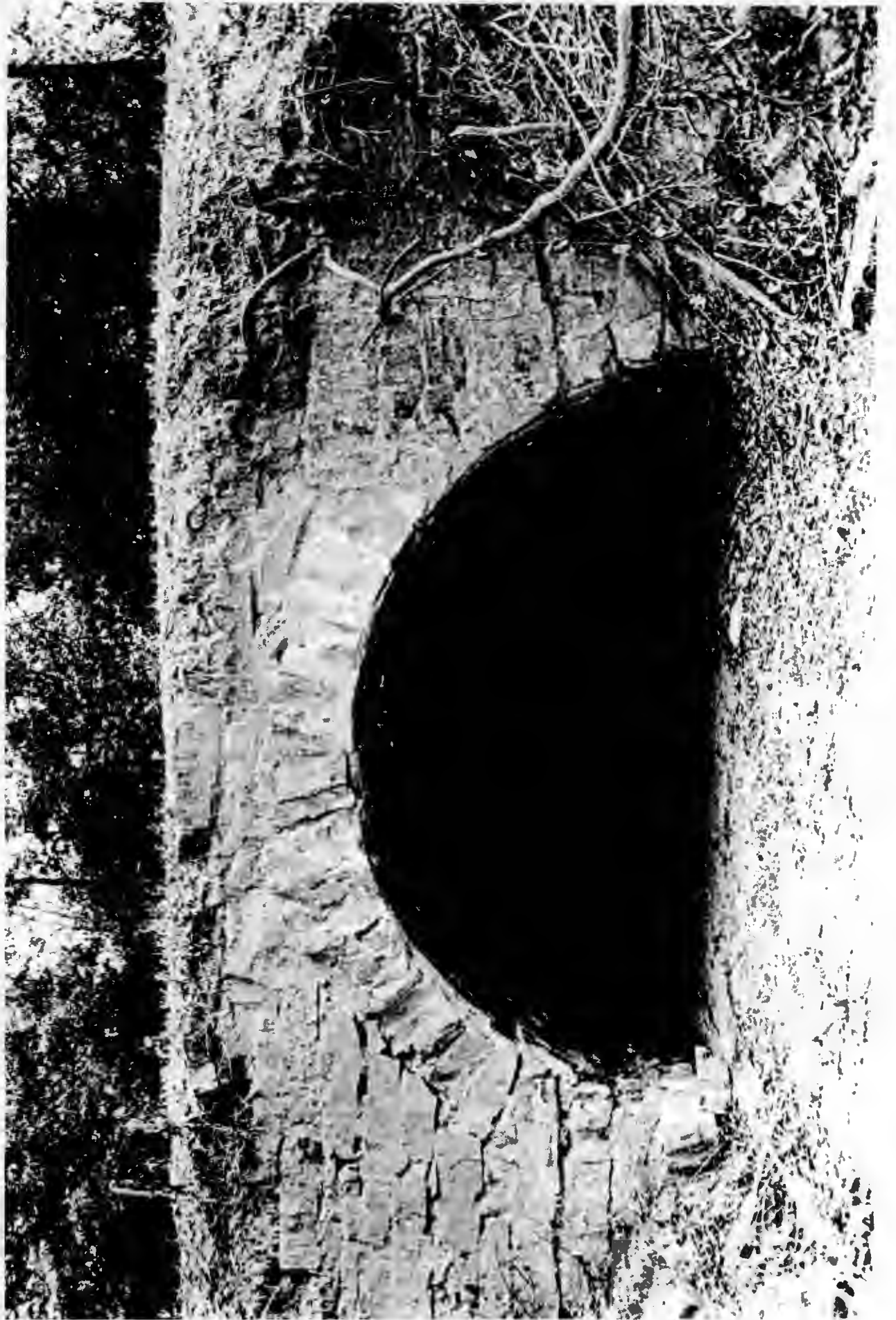
NEW BLAINE, ARK.  
35093-C4-TF-024

1993

DMA 7354 IV SW-SERIES V884

(CHICKALAH MTN EAST)  
7354 III NE





1. Main Street Bridge
2. Logan Co. AR
3. Zen Caphren
4. August 2001
5. AHPD
6. side view of bridge
7. #1



1. Main Street Bridge
2. Logan Co., AR
3. Zan Cochran
4. Aug. 2001
5. AHPP
6. Northwest side of bridge
7. # 2





1. Main Street Bridge
2. Logan Co., AR
3. Zac Calkins
4. Aug. 2001
5. AHP
6. View under the bridge.
7. #3