

CLARENDON MULTIPLE RESOURCE AREA
MONROE COUNTY

ARKANSAS HISTORIC PRESERVATION PROGRAM

Survey Number CL-2 Owner Mrs. Brenda Catlett
Property Name Jefferies Building Address P. O. 189
Address 122 Madison Forrest City, AR 72335
City Clarendon, AR
Significant Date/s c. 1904

ARCHITECTURAL DESCRIPTION

The Jefferies Building is one of the last commercial buildings with pressed metal facades left in Clarendon. It is located on Madison Street directly across from the Courthouse. The two-story brick structure has a pressed metal facade that faces Madison Street to the South. It was built circa 1904 for a dry goods store on the first floor and a lodge on the second floor. The facade has its original storefront containing a central, double-door, recessed entrance flanked by display windows, and smaller transom windows above. There is also a single wooden door on the west corner of the front that opens to a stairway leading to the second floor. The windows are separated by metal framework. There are small metal pilasters on either side of the recessed entrance, and one on the right side of the wooden door. Two larger pilasters are on either corner of the facade. The second story of the facade has four rectangular double-hung, one-over-one windows. The windows are divided by single pilasters between the second and third and third and fourth windows. There are a pair of pilasters between the second and third windows, and on each corner of the facade. Above the windows is elaborately decorated pressed metal topped by a raised cornice with a roll of modillions underneath. There is also a row of arched windows on the second story of the west wall that have been bricked up. The building is now vacant.

STATEMENT OF SIGNIFICANCE

The two-story Jefferies Building at 122 Madison is one of the last buildings with a pressed metal facade left in Clarendon. It was built circa 1904 by William Ladson Jefferies with a grocery store on the bottom floor and an Elks lodge on the top floor. Jefferies came to Clarendon in 1878 and lived in the town for over fifty years. In 1904, Jefferies also established the Citizens Bank in Clarendon and served as its president. He was a merchant in Jefferies and Son Company, and established the Jefferies Lumber Company in the early 1900's. The Jefferies building was later known as the McCabe store and later as the Lambert Building with storage on the top floor. It is presently owned by Mrs. Brenda Catlett of Forrest City and is now vacant. The businesses in the Jefferies Building were successful during the early 1900's because of their location across Madison Street from the County Courthouse.

Continued (Page 2)

Survey Number CL-2

Property Name Jefferies Building

Verbal Boundary Description: Original Town on Clarendon East Pt.
Lots 3, 4 Block 8

Acreage: less than one

Quadrangle Name: Clarendon, Ark.

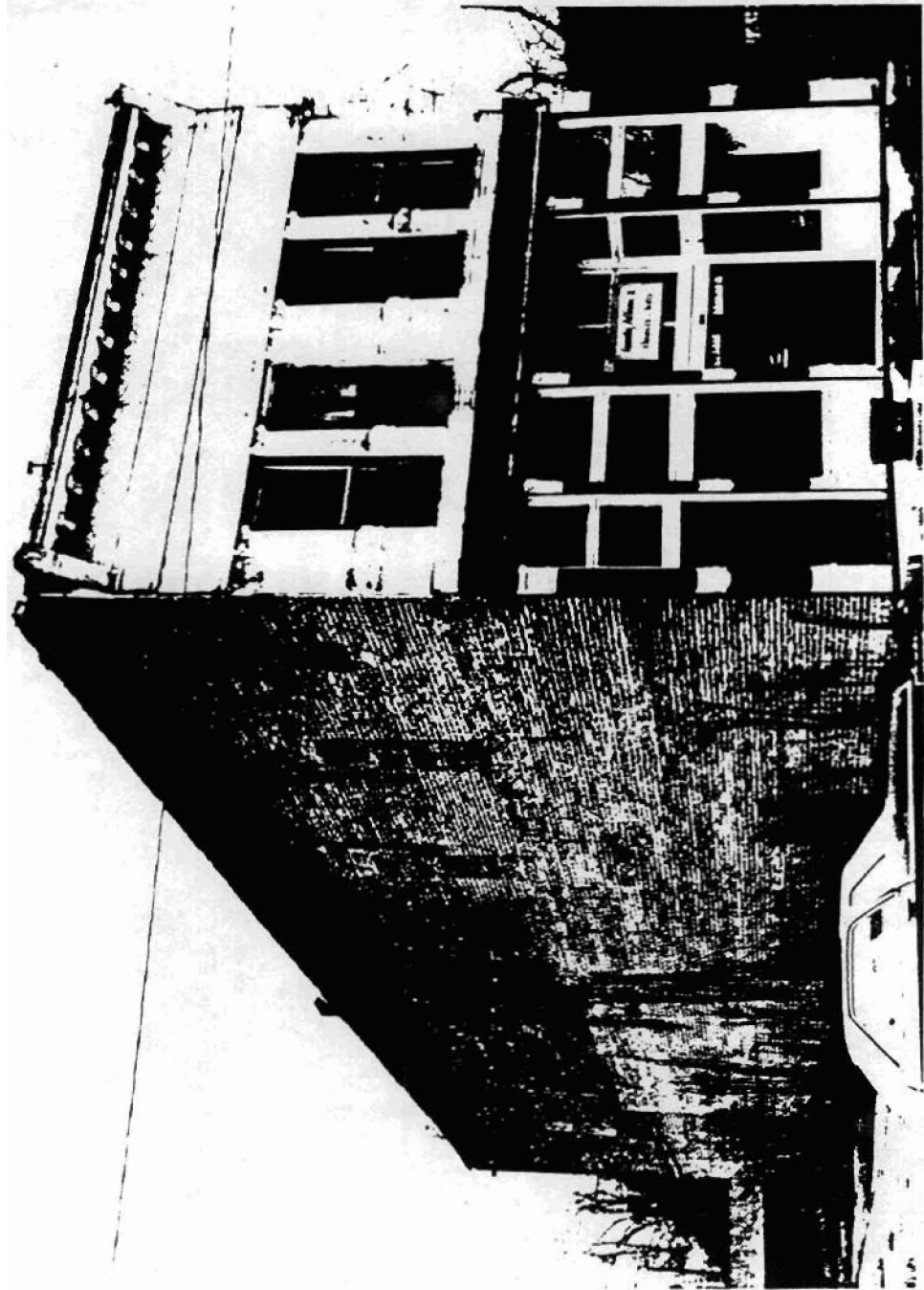
Quadrangle Scale: 1:24000

UTM Reference:

Zone: 15

Easting: 654110

Northing: 3840430



CL-2 Jefferies Building 122 Madison
HISTORIC RESOURCES OF CLARENDON
Jeff Lewellen, photographer
Negatives at AHPP
Viewed from the Southwest