

CLARENDON MULTIPLE RESOURCE AREA  
MONROE COUNTY

ARKANSAS HISTORIC PRESERVATION PROGRAM

Survey Number CL-10 Owner Floyd Pierce  
Property Name Bounds Building Address 404 North  
Address 105 Second Clarendon, AR 72029  
City Clarendon, AR  
Significant Date/s 1917

#### ARCHITECTURAL DESCRIPTION

The Bounds Building is a simple one-story brick structure that originally housed a dry goods store in 1917. The building runs east and west behind the buildings facing Madison Street between Madison and Second. This is the only building left in Clarendon built between 1913 and 1917 along Madison and Second that has retained its original storefront. The wooden storefront under the brick parapet is on the east side of the building facing Second Street. It contains two wooden and glass doors in the center, flanked by large glass display windows. All of this is covered by seven glass transom windows with wooden framework.

#### STATEMENT OF SIGNIFICANCE

The Bounds Building represents the best preserved commercial building in Clarendon left from the commercial expansion in the town between 1910 and 1920. Largely due to the increased activity of the railroads during this period, commercial buildings began appearing on the section of Madison Street east of the Courthouse and on other streets away from the older center of commercial activity directly across from the courthouse. The Bounds Building was constructed in 1917 at 105 Second, one-half block north of Madison. John Bounds was a salesman and a clerk in a dry goods store in Clarendon in 1900, and by 1917, at the age of 42, he built this one-story brick building for his own store. It originally housed a dry goods store, and later became a grocery store and, more recently, a plumber's shop. It is presently owned by Floyd Pierce. The building has largely remained unaltered, unlike the buildings on Madison Street dating from the same period. It is one of the only buildings of its period that retains its original store front in Clarendon.

Verbal Boundary Description: Original Town of Clarendon  
East 1/2 of North 1/2 Lot 5 Block 8

Acreage: less than one

Quadrangle Name: Clarendon, Ark.

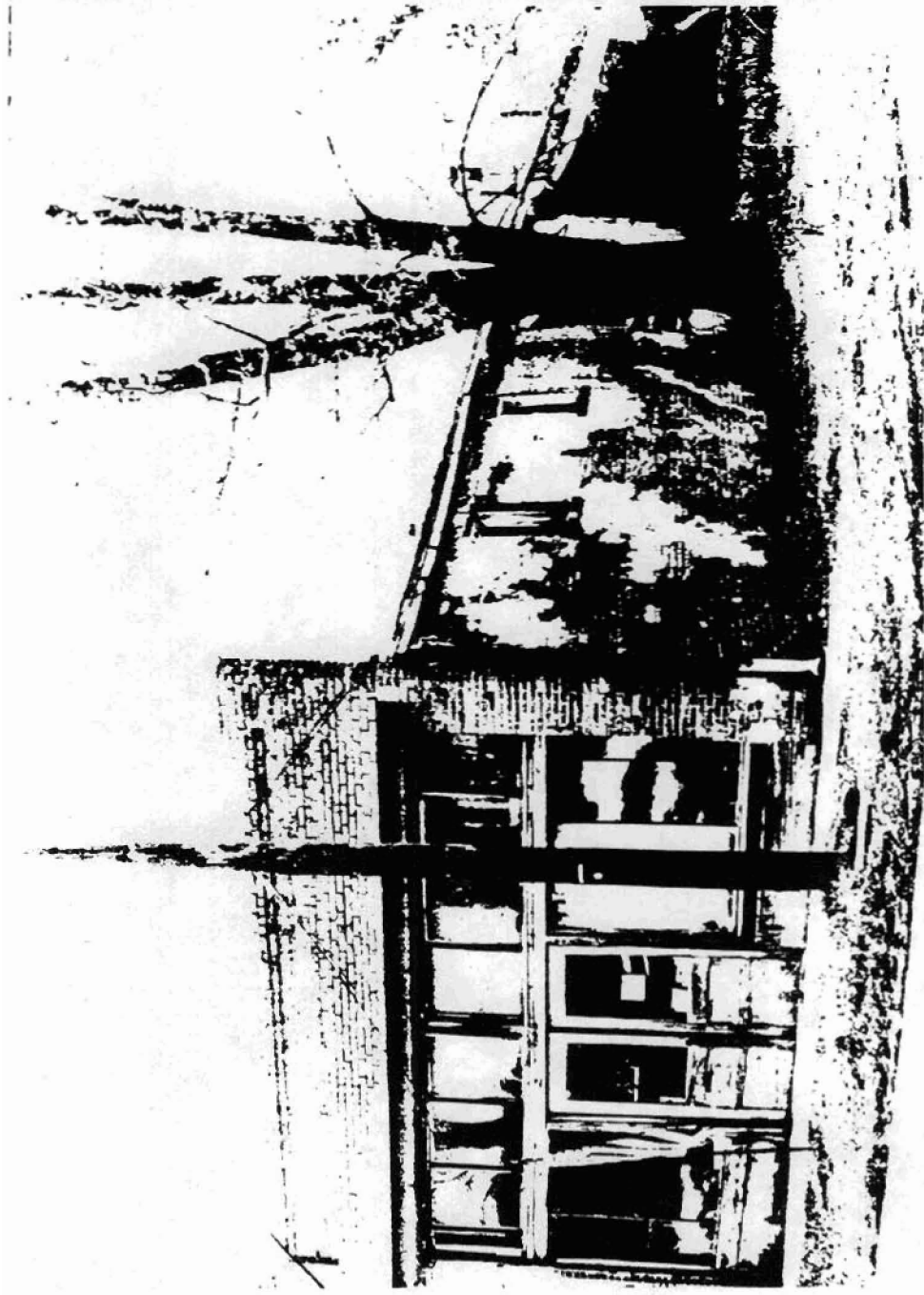
Quadrangle Scale: 1:24000

UTM Reference:

Zone: 15

Easting: 654130

Northing: 3840470



CL-10 Bounds Building 105 Second  
HISTORIC RESOURCES OF CLARENDON  
Jeff Lewellen, photographer  
Negatives at AHPP  
Viewed from the Northeast