

HISTORIC RESOURCES OF STONE COUNTY
STONE COUNTY, ARKANSAS

ARKANSAS HISTORIC PRESERVATION PROGRAM

Survey Number ST-90
Property Name Farmers and Merchants Bank

Owner Bank of Mountain View
Address c/o Charles Lowe

Location Mountain View

East Main St.

Significant Date/s 1910

Mountain View, AR 72560

ARCHITECTURAL DESCRIPTION

The Farmers and Merchants Bank Building is situated east of the courthouse square on Main Street, the square's southern boundary. The two story 1910 bank, is a rectangular stone constructed building covered with a flat roof with parapet. The structure's symmetrical massing contrasts its asymmetricaly-designed, dressed stone street facade (south). The builder, Bill Laroe, paired round-arched openings, each adorned with voussiors and keystones, at the west end of the facade. A double hung one-over-one window with transom and a single leaf door with transom appear with the arched openings. The double round-arched motif is somewhat offset by a wide segmental arched window opening articulated by an exaggerated keystone and voussiors. Two symmetrically arranged window openings mark a rather nondescript second story. However, the principal facade is nicely finished with a dentilled cornice made of a series of projecting stones and capped by stone coping.

Rusticated stone facings distinguish the secondary elevations of the building from the street facade. The second story fenestration of rectangular openings and an outside door entrance, accessible by a steel stairway and landing, characterize the east elevation that runs parallel to an alley.

STATEMENT OF SIGNIFICANCE

The 1910 Farmers and Merchants Bank represents the first period of stone construction in the commercial structures in Mountain View. Though traditional in style, it represents an awareness by the builder of the Romanesque style through the stone work around the door and window openings. Bill Laroe, a local stone-mason who also constructed the 1922 Stone County Courthouse, built the Farmers and Merchants Banks, as well as other stone commercial buildings along the courthouse square in Mountain View. The two-story bank is a traditional rectangular commercial structure constructed of stone with a flat roof and parapet. The structure's symmetrical massing contrasts its assymetrical designed dressed stone street facade.

Verbal Boundary Description: Pt. NW $\frac{1}{4}$ of NW $\frac{1}{4}$ of S12, T14N, R11W, and more fully described as commencing 20 ft. West from the SE corner of Lot 6 in the Stone County Addition to said town of Mountain View, on Main St., and running thence North 27 degrees E. 72 ft. to the NE corner of said Lot 6; thence North 32 ft.; thence East 52 ft.; thence S 27 degrees W 108 ft; thence West 23 ft. to the place of beginning, containing 1/12 acre, more or less.

page 2
ST-90

Acreage: less than 1
Quadrangle Name: Mountain View

UTM Reference:
Zone: 15

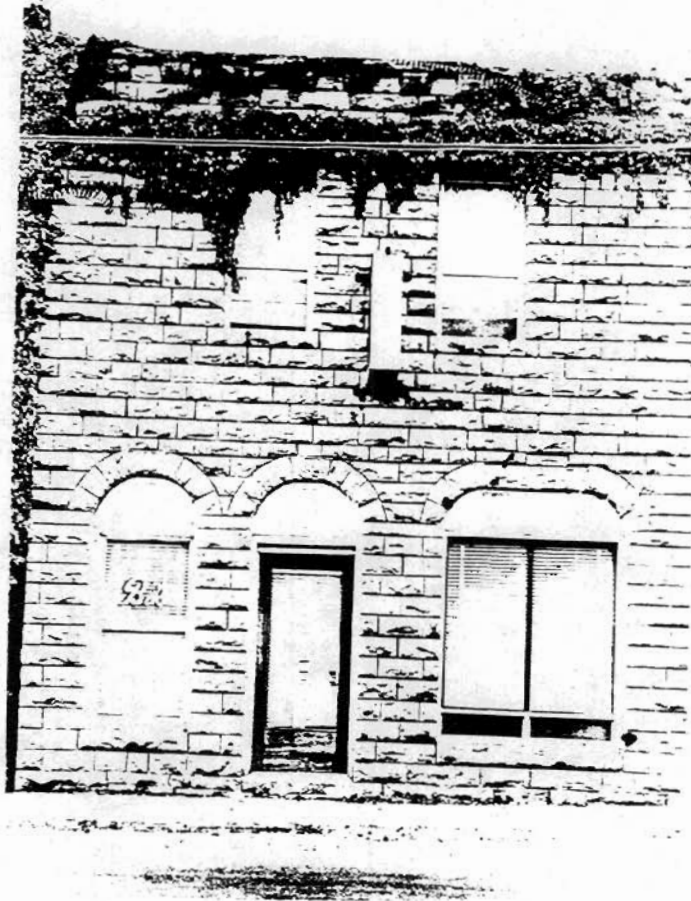
Easting: 579700

Northing: 3969540



RESOURCE PHOTOGRAPH SHEET

ARKANSAS
HISTORIC
PRESERVATION
PROGRAM

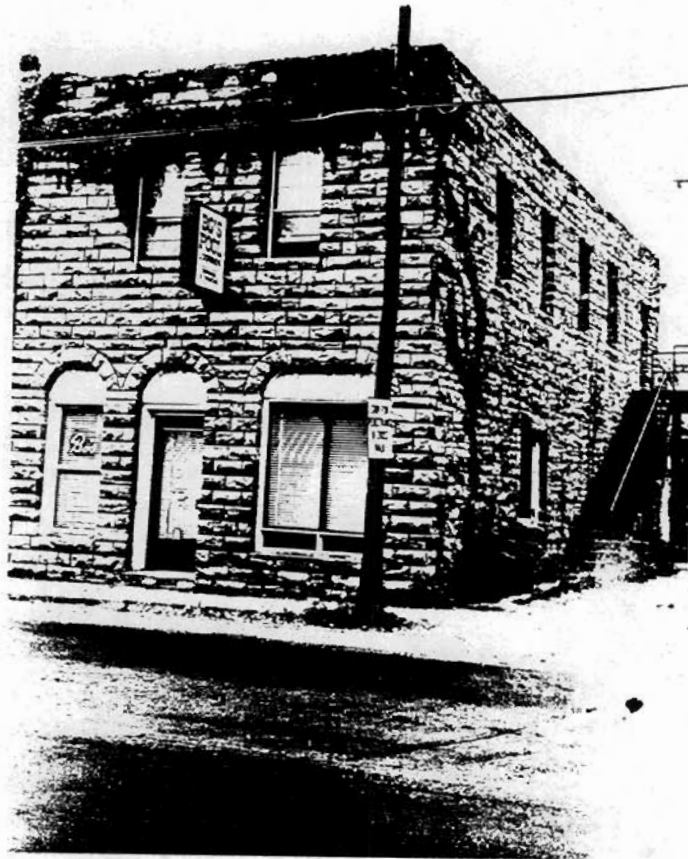


Historic Resources of Stone County
Farmers & Merchants Bank, ST-90
Mountain View
Don Brown, photographer
1983
Negative on file at the AHPP
Viewed from the south



RESOURCE PHOTOGRAPH SHEET

ARKANSAS
HISTORIC
PRESERVATION
PROGRAM



Historic Resources of Stone County
Farmers & Merchants Bank, ST-90
Mountain View
Don Brown, photographer
1983
Negative on file at the AHPP
Viewed from the southeast